

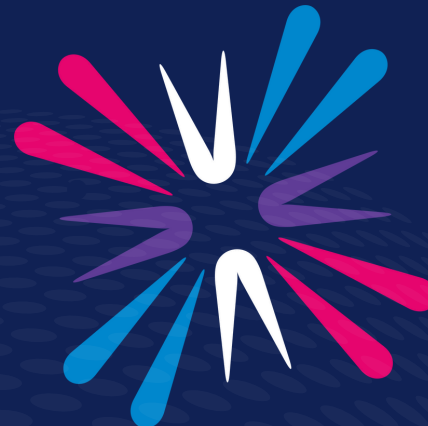
Corporate Friends



Get in touch

**If you would like more information, please call
Danielle Medd on 01296 823048 or email
daniellemedd@chilternsneurocentre.org**

Chilterns Neuro Centre
Oakwood Close, Wendover, Buckinghamshire HP22 5LX
Registered Charity No. 800853



What being part of the Chilterns Neuro Centre family means

Our vision at the Chilterns Neuro Centre is to create a community in which people affected by neurological conditions can live life to the full. We want to be a charity that enhances the quality of life of individuals, families and communities of people affected by neurological conditions.

The Centre was founded in 1985 as the Chilterns MS Centre but, in 2022, it began a pilot programme to open up its services to people with conditions other than MS, starting with Parkinson's and stroke survivors. In 2023, the pilot became permanent and the Centre changed its name.

We currently work with more than 800 members, building a community in which people affected by neurological conditions can live life to the full.

By becoming a corporate friend, you will help us to support as many of these people as possible.

Corporate Friends

Join our Corporate Friends to engage with shared community.

- Network with other local businesses and potential new customers to increase sales and profitability
- Promote your brand and enhance your reputation locally
- Deliver your corporate social responsibility (CSR) objectives whilst inspiring and motivating your employees, customers and consumers
- Channel your charitable giving in a strategic, effective and sustainable way
- Access our exciting events and volunteering programme, ideal for team building

All of these benefits will help your business to secure an advantage over your competitors within the local community



“At Ashridge Group we are a local family-owned business that values its people and community.

Having seen first-hand the difference that the Chilterns Neuro Centre makes to the lives of so many people, we decided to join the Corporate Friends Scheme as Platinum members.

The Centre offers such an amazing environment for people, you only need to sit in the foyer for a minute or two to experience the tremendous positive impact it has on their lives.”

Mark & Emma Walker,
Ashridge Group.

Corporate Friends Includes

Gold £50/month Platinum £100/month Diamond £250/month

- **Prominent Recognition Plaque:** A thank-you plaque displayed on our reception wall, showcasing your generous support to every visitor. ★ ★ ★
- **Enhanced Brand Visibility:** Your logo prominently featured on our website, prominently displayed at the Centre, on our screen and corporate friends board. Permission to use our logo on your email signatures, and company literature, reinforcing your commitment to our cause. ★ ★ ★
- **VIP Centre Tour:** An exclusive, behind-the-scenes tour of the Centre for your team, allowing them to witness first-hand the meaningful difference they are making for our members. ★ ★ ★
- **Networking Opportunities:** First refusal to our regular networking events, offering valuable connections and opportunities for collaboration. ★ ★ ★
- **Widespread Recognition:** Acknowledgment of your support in our monthly e-newsletter, reaching over 1,000 engaged subscribers who will see your brand's commitment to our mission. ★ ★ ★
- **Social Media Spotlight:** Dedicated social media posts highlighting your support, reaching our growing audience across multiple platforms, including link to your presence on our website ★ ★ ★
- **Corporate Partnership Spotlight:** Your logo and web address featured on our Corporate Partner page, increasing your brand's exposure to our engaged community with company profile & interview ★ ★
- **Network Hosting -** An opportunity to speak at or host our networking events, attended by local companies. ★ ★
- **High-Visibility Advertising:** A dynamic advert on our large reception screen, viewed by over 500 visitors weekly, ensuring your brand is seen by a diverse and engaged audience. ★
- **Exclusive Facility Access:** Opportunity to use our state-of-the-art accessible facilities, including large meeting rooms and catering services, providing a professional space for your events (subject to availability). ★